

# Official Map of the Corporate Limits of the City of Dacula, Georgia.

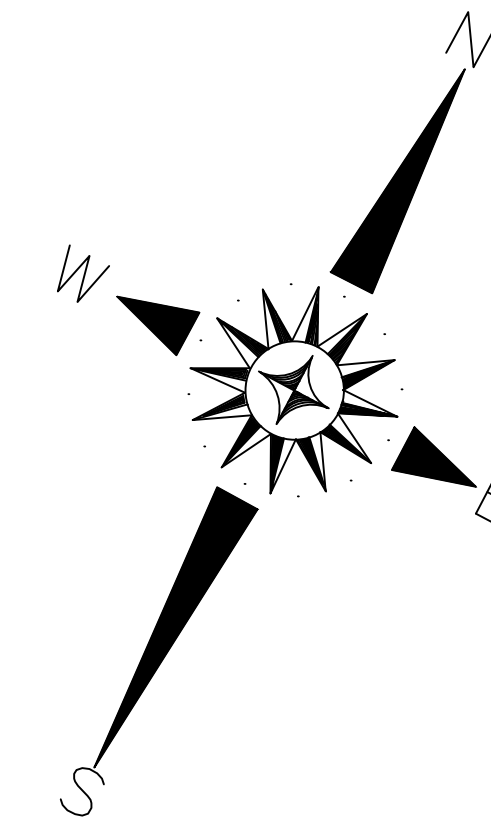
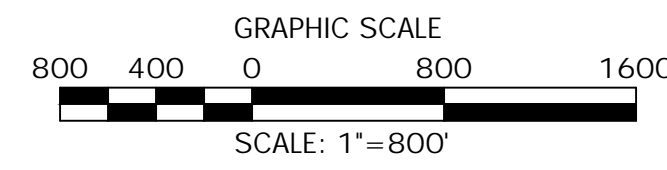


## ZONING DISTRICT LEGEND

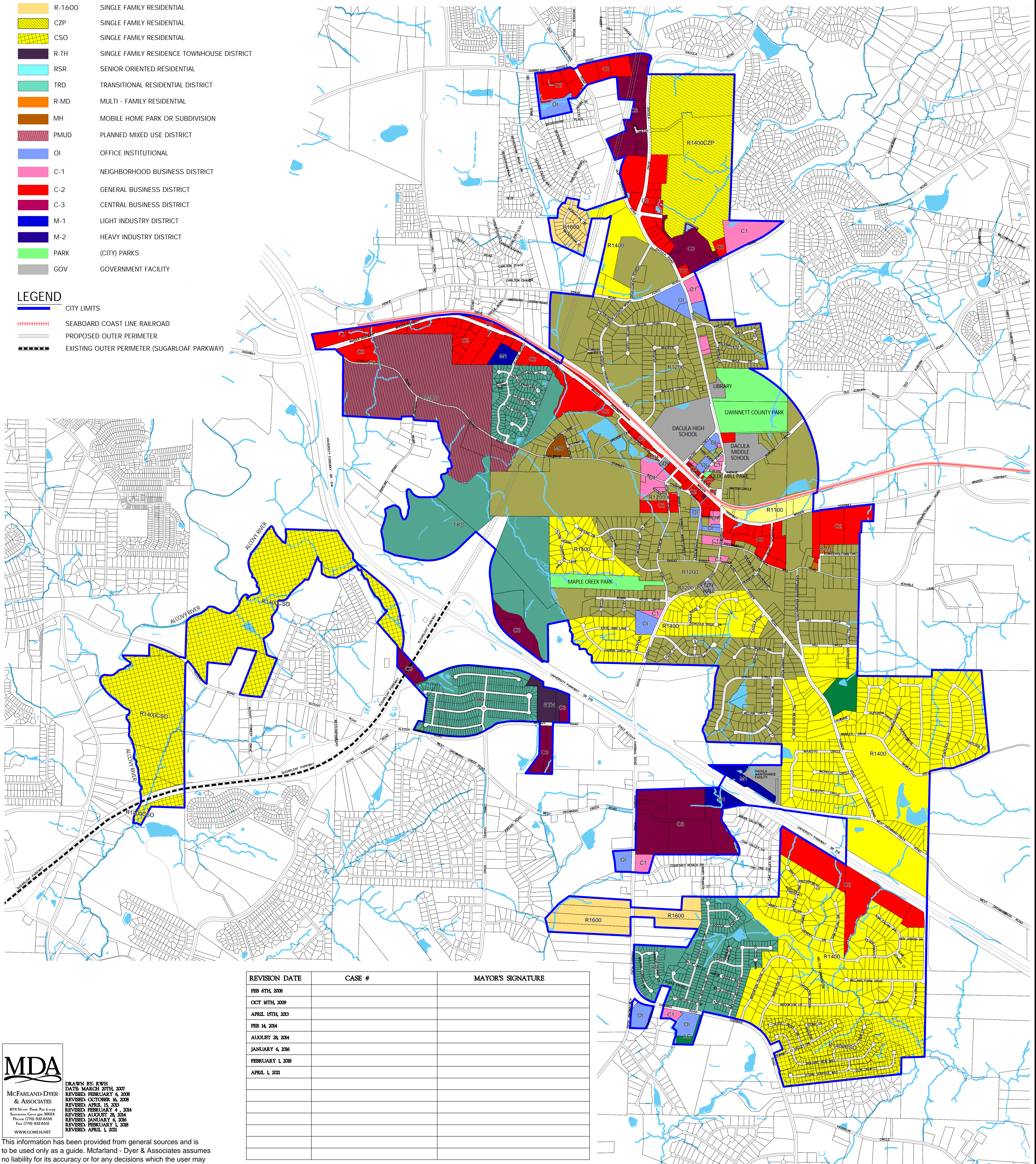
- AG AGRICULTURAL DISTRICT
- R-1100 SINGLE FAMILY RESIDENTIAL
- R-1200 SINGLE FAMILY RESIDENTIAL
- R-1400 SINGLE FAMILY RESIDENTIAL
- R-1600 SINGLE FAMILY RESIDENTIAL
- CZP SINGLE FAMILY RESIDENTIAL
- CSO SINGLE FAMILY RESIDENTIAL
- R-TH SINGLE FAMILY RESIDENCE TOWNHOUSE DISTRICT
- RSR SENIOR ORIENTED RESIDENTIAL
- TRD TRANSITIONAL RESIDENTIAL DISTRICT
- R-MD MULTI - FAMILY RESIDENTIAL
- MH MOBILE HOME PARK OR SUBDIVISION
- PMUD PLANNED MIXED USE DISTRICT
- OI OFFICE INSTITUTIONAL
- C-1 NEIGHBORHOOD BUSINESS DISTRICT
- C-2 GENERAL BUSINESS DISTRICT
- C-3 CENTRAL BUSINESS DISTRICT
- M-1 LIGHT INDUSTRY DISTRICT
- M-2 HEAVY INDUSTRY DISTRICT
- PARK (CITY) PARKS
- GOV GOVERNMENT FACILITY

### LEGEND

- CITY LIMITS
- SEABOARD COAST LINE RAILROAD
- PROPOSED OUTER PERIMETER
- EXISTING OUTER PERIMETER (SUGARLOAF PARKWAY)



ZONING MAP ADOPTION  
CITY OF DACULA, MAYOR \_\_\_\_\_ DATE \_\_\_\_\_



REVISION DATE	CASE #	MAYOR'S SIGNATURE
FEB 07th, 2008		
OCT 15th, 2009		
APRIL 15th, 2013		
FEB 14, 2014		
AUGUST 28, 2014		
JANUARY 6, 2016		
FEBRUARY 1, 2018		
APRIL 1, 2021		



This information has been provided from general sources and is to be used only as a guide. McFarland - Dyer & Associates assumes no liability for its accuracy or for any decisions which the user may make based on this document.